

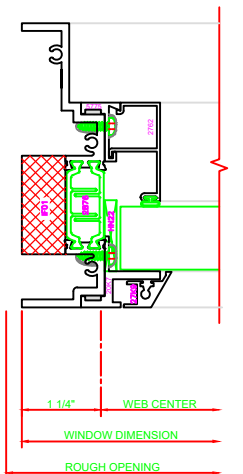
100	HEAD
	SERIES: 450 FIXED

530	MEETING RAIL
	SERIES: 450G FIXED/C.I. 4-BAR ARMS

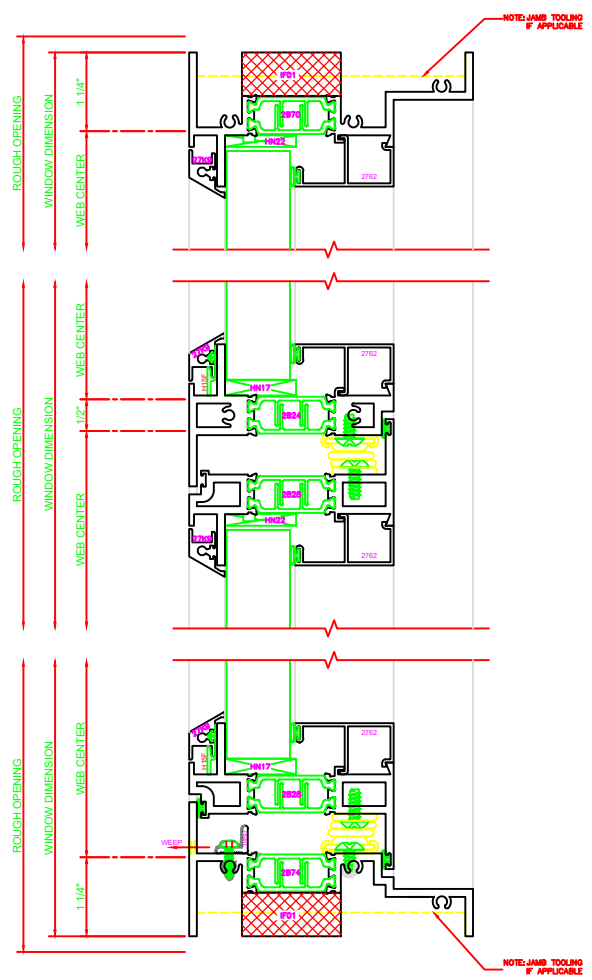
230	SILL
	SERIES: 450G CASEMENT IN 4-BAR ARMS

433	JAMB
	SERIES: 450G CASEMENT IN 4-BAR ARMS

434	JAMB
	SERIES: 450G CASEMENT IN

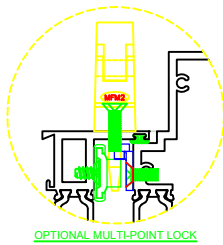
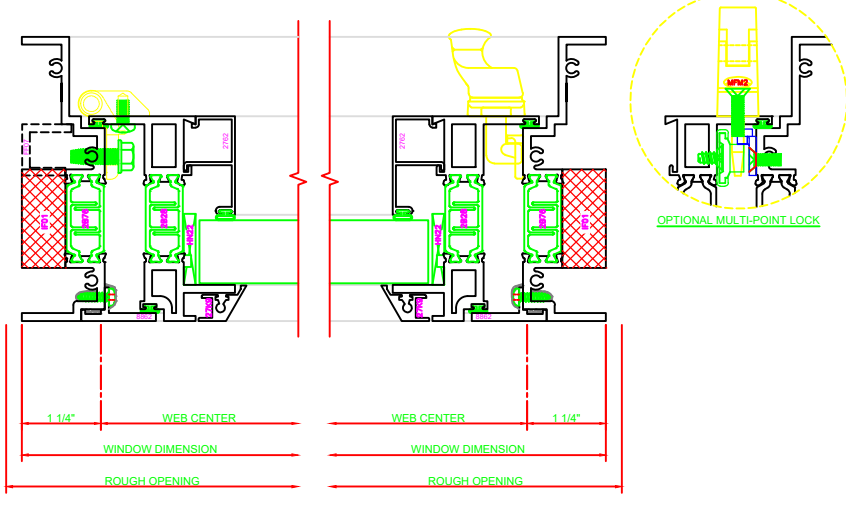


402	JAMB
	SERIES: 450G FIXED



## 4-BAR ARMS BUTT HINGE

**13 ERECTOR NOTE:**  
THE HINGED JAMB FRAME SHALL BE INSTALLED PLUMB. ALL HINGES SHALL BE SECURELY BLOCKED AND ANCHORED TO THE CONDITION THROUGH THE HINGES OR AS CLOSE AS POSSIBLE TO THE HINGES.



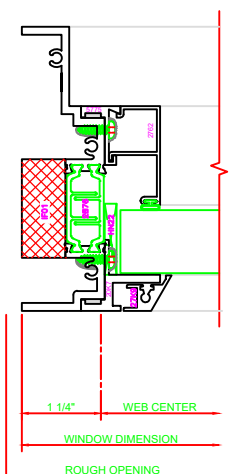
100	HEAD
	SERIES: 450 FIXED

532	MEETING RAIL
	SERIES: 450G FIXED/C.I. BUTT HINGE

231	SILL
	SERIES: 450G CASEMENT IN BUTT HINGE

435	JAMB
	SERIES: 450G CASEMENT IN BUTT HINGE

434	JAMB
	SERIES: 450G CASEMENT IN



402	JAMB
	SERIES: 450G FIXED

